



Hygienic Trough-Shaped Conveyor belt, Model: HCB-400-TS

<https://www.jegerings.com/en/>



Appurtenances

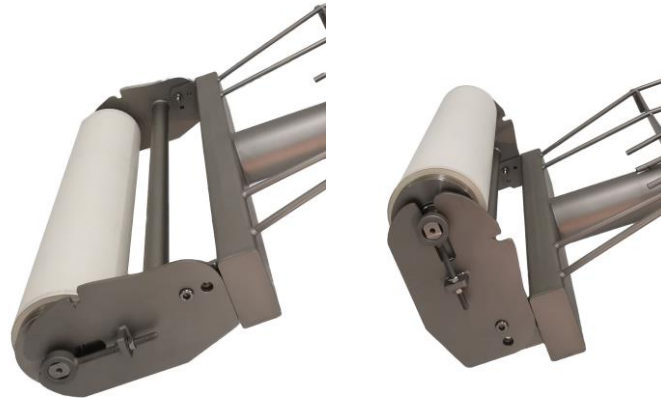
- Stainless steel drum motor and turning roll
- One-sided support of the belt frame
- The input and output funnel can both be dismantled.
- Detachable conveyer belt
- Stainless steel brake castors

Advantages

- By means of the trough-shaped belt, products are led automatically to the centre of the belt. That is why there is no need for upright partitions.
- Another advantage of the trough-shaped belt is that products are transported much better. Even when the belt is wet due to the vegetable juices.
- The input and output funnel fit precisely to ensure that no products will be spilled on the floor. In the input funnel a white (food grade) rubber closure is mounted. In the output funnel a scraper is mounted which prevents products to stick to the belt and consequently prevents products to fall on the ground on the return part.



- The belt can be cleaned thoroughly and easily. The input and output funnel can be detached very easily. By means of a unbolt button, the turning roll can be turned over to release the belt. Because the frame only has legs on one side, the belt can be removed from the belt frame on the other side very easily. Another advantage is that the belt frame can be cleaned perfectly on the inside as well.



- The belt frame is very solid. All the seams are completely welded.
- Both in the stainless steel drum motor and the stainless steel turning roll the bearings are mounted inside, so that they cannot get in touch with water.
- On the inside of the belt there are two guiding belts. They move along the guiding rails of the belt frame, the drum motor and the turning roll. The belt runs in alignment perfectly because of this construction.

Technical data

Dimensions: L x W x H = 3492 x 708 x 1464 mm, belt width: 400 mm

Electrical data: 3 Ph / 400 V / 0.25 kW / 0.7 A / 127 RPM, belt speed appr. 45 m/min.

Weight: 140 kg

The dimensional diagram of the HCB-400-TS is shown on page 5.

Prices

Model: HCB-400-TS:

on request

Including:

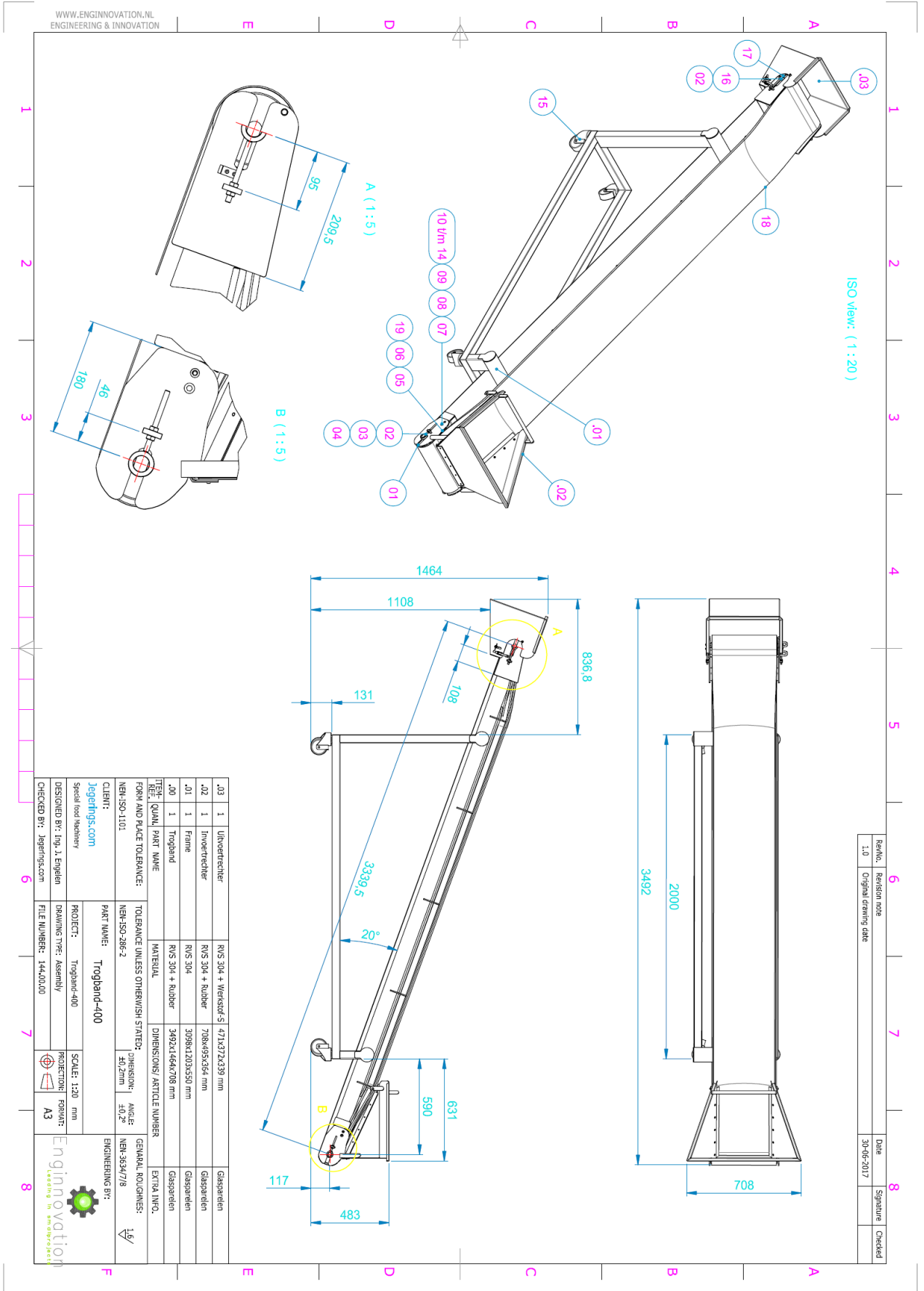
- Stainless steel drum and turning roll
- One-sided support of the belt frame
- The input and output funnel can both be dismantled
- Detachable conveyer belt
- Stainless steel brake castors

Delivery time: stock – 4 weeks.

Delivery: ex. works Deurne/ the Netherlands. Packaging and transportation excluded.

Warranty: 1 year, outside the Netherlands only on spare parts.





RevNo.	Revision note	Date	Signature	Checked
1.0	Original drawing date	30-06-2017		